

PART OF THE S.E. 1/4 OF SEC. 9, T.5N., R.1W., S.L.B. & M. ROLLING OAKS SUBDIVISION NO. 1

198

IN OGDEN CITY

TAXING UNIT: 23, 25

SCALE 1"=60'

SEE PAGE 32

SEE PAGE 32

SEE PAGE 165

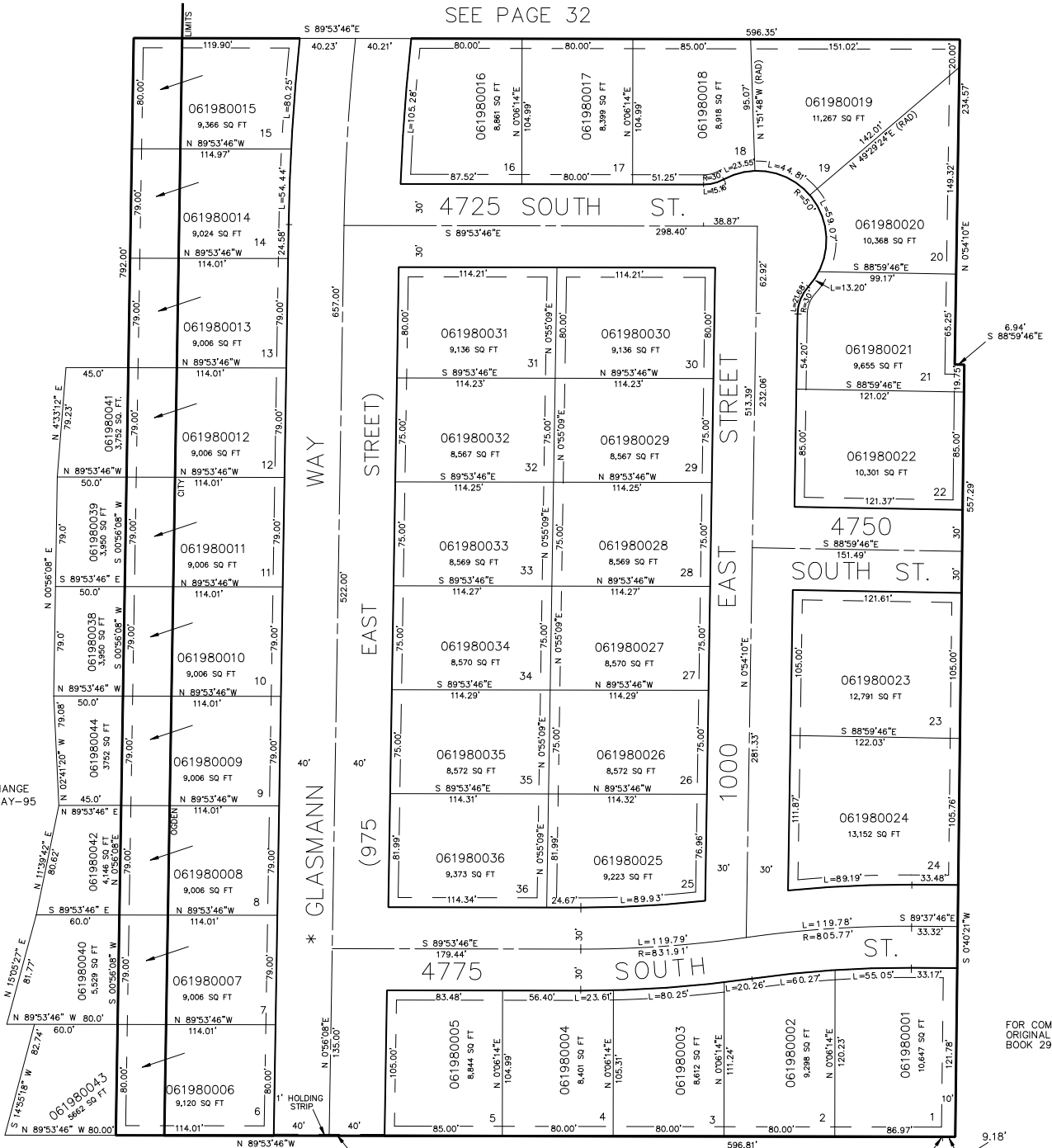
SEE PAGE 34

FOR COMPLETE ENG. DATA SEE
ORIGINAL DEDICATION PLAT IN
BOOK 29, PAGE 39 OF RECORDS.

7' UTILITY & DRAINAGE EASEMENTS
EACH SIDE OF PROPERTY LINE
AS INDICATED BY DASHED LINES
EXCEPT AS SHOWN OTHERWISE.

P.O.B.
SE COR. OF SW 1/4
OF SE 1/4 OF SEC 9

L.D.F. 8-87



SEE PAGE 32

* STREET NAME CHANGE
1757-874, 18-MAY-95